

E X C L U S I V E

N E W
C O N S T R U C T I O NB U Y E R S
B R O K E R S W E L C O M EF A S T - T R A C K
C O N S T R U C T I O N

\$879,000.00



About This Home

4510 Raymond Avenue, Brookfield, IL 60513

Welcome to an IMX exclusive new construction home in the charming town of Brookfield, IL. This new construction home offers you the unique advantage of selecting from four distinct design elevations while working closely with our expert design team to semi-customize key living spaces, including the kitchen, bathrooms, living room, and beyond. Let us guide you in bringing your dream home to life!

PROPERTY HIGHLIGHTS

4 bedrooms | 4.5 bathrooms



4404 SQ FT TOTAL
1568SQFT 1ST FLOOR
1568SQFT 2ND FLOOR



FINISHED BASEMENT
1268 SQFT



2 CAR GARAGE


GET IN TOUCH
Natasa Dubak
708.571.2120
www.imx-homes.com


HOME DETAILS

4510 RAYMOND AVENUE, BROOKFIELD, IL 60513

QUALITY CONSTRUCTION FEATURES

- FAST-TRACK CONSTRUCTION
- STEEL REINFORCED FOUNDATION
- VENTED SHINGLE ROOF, ALUMINUM SOFFITS, FASCIA, GUTTERS & DOWNSPOUT
- 9 FOOT, FIRST FLOOR CEILING HEIGHT
- 9 FOOT, BASEMENT CEILING HEIGHT
- 8 FOOT, SECOND FLOOR CEILING HEIGHT
- 6'-8", Shaker Door Collection
- PREMIUM DOOR HARDWARE
- CUSTOM MUDROOM BUILT IN'S LOCKER UNIT
- 5 ¼" MDF BASBOARDS
- 2 ¼" MDF CASING
- 3 ¼" RED OAK SELECT HARDWOOD FLOORING - FIRST FLOOR & SECOND FLOOR HALLWAY
- CUSTOM RED OAK STAIRS (1ST TO 2ND FLOOR)
- VINYL ENERGY EFFICIENT WINDOWS
- 1 YEAR STANDARD IMX WARRANTY

ENERGY SAVINGS

- HIGH EFFICIENCY CARRIER HVAC SYSTEM WITH VARIABLE SPEED A/H
- R-20 BATT INSULATION PACKAGE ON ALL EXTERIOR WALLS
- R-20 BATT INSULATION BETWEEN GARAGE AND LIVABLE
- PRE-WIRING FOR ELECTRIC CHARGER IN GARAGE
- R-49 SPRAY ATTIC INSULATION

ELECTRIC

- PREWIRE FOR CEILING FIXTURES IN ALL BEDROOMS AND LIVING AREAS
- RECESSED INTERIOR LIGHTING WITH LED BULBS
- EXTERIOR COACH LIGHTS
- DECORATIVE LED LIGHT FIXTURES IN ALL RESTROOMS
- EXTERIOR WATERPROOF OUTLETS
- SMOKE / CARBON MONOXIDE DETECTORS INSIDE & OUTSIDE ALL BEDROOMS
- CAT 6 PRE WIRED TO ALL BEDROOMS AND LIVING ROOM
- GFI OUTLETS IN ALL WET AREAS

KITCHEN

- STAINLESS STEEL APPLIANCES (REFRIGERATOR, DISHWASHER, RANGE, MICROWAVE, RANGE HOOD)
- WALK IN PANTRY
- PROCRAFT SHAKER CABINETS
- 18" BACKSPLASH THROUGHOUT KITCHEN
- 36" UPPER CABINETS WITH CROWN MOLDING
- PREMIUM MODERN FAUCET
- QUARTZ KITCHEN COUNTERTOPS

EXTERIOR

- 2 CAR GARAGES WITH 8' OVERHEAD DOORS
- LIFTMASTER Wi-Fi ½ HP GARAGE DOOR OPENER
- PAINTED WALLS AND CEILING
- CONCRETE DRIVEWAY, APRON AND WALK
- WATER SPICKETS

BATHROOMS

- PREMIUM PLUMBING FINISHES
- PREMIUM TOILETS
- PORCELAIN TILES (FLOOR, BASE, SHOWER & BATH WALLS)
- CUSTOM VANITIES
- CUSTOM MASTER RESTROOM MIRROR
- 3/8" CUSTOM GLASS SHOWER ENCLOSURE IN MASTER SHOWER
- LUXURY VANITIES IN ALL OTHER RESTROOMS
- FULL WIDTH MIRRORS OVER VANITIES

LAUNDRY

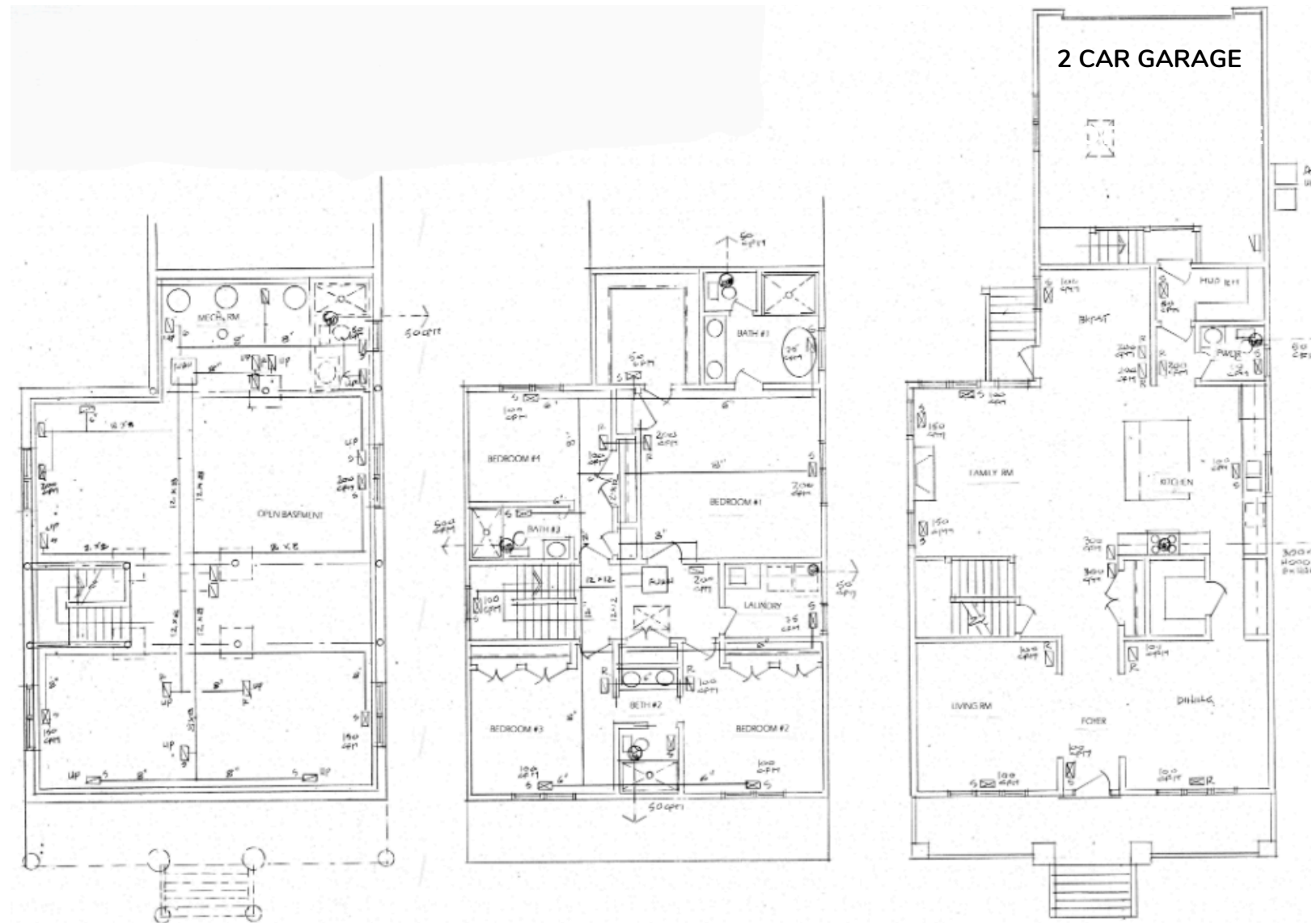
- PORCELAIN TILE FLOOR
- CONNECTION OF LAUNDRY APPLIANCES
- FINISHED WITH UPPER CABINETS & UTILITY SINK

PLUMBING

- (1) HIGH EFFICIENCY GAS WATER HEATER

FLOOR LAYOUT

4510 RAYMOND AVENUE, BROOKFIELD, IL 60513



FINISHED BASEMENT
1268 SQFT

SECOND FLOOR
1568 SQFT

FIRST FLOOR
1568 SQFT



GET IN TOUCH

Natasa Dubak

708.571.2120

www.imx-homes.com